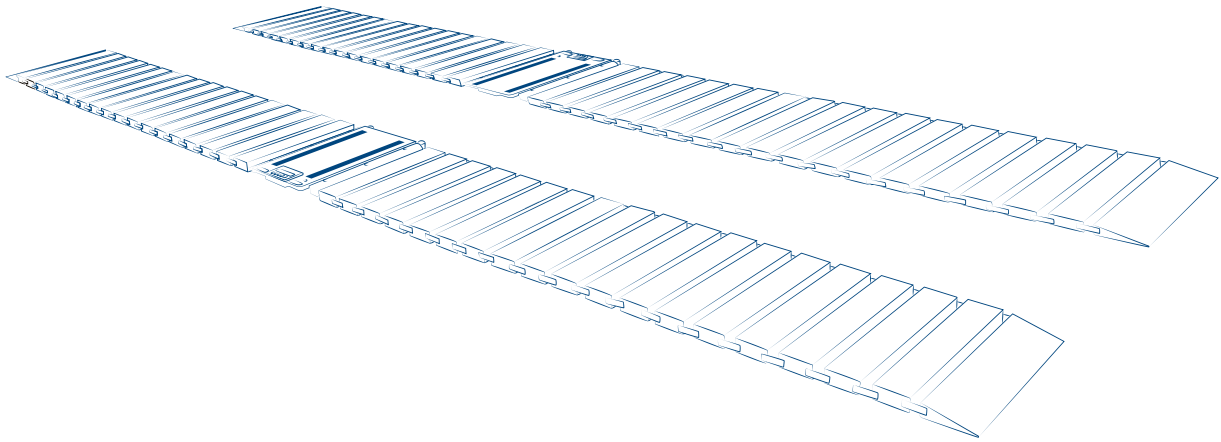


EASY LEVEL

Levelling modules for axle weighing stations

QUICK START GUIDE

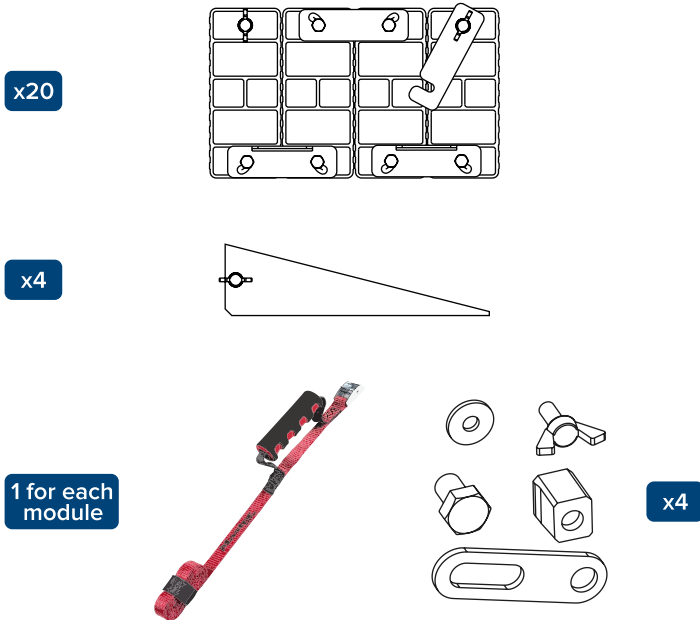
ENGLISH



Kit parts

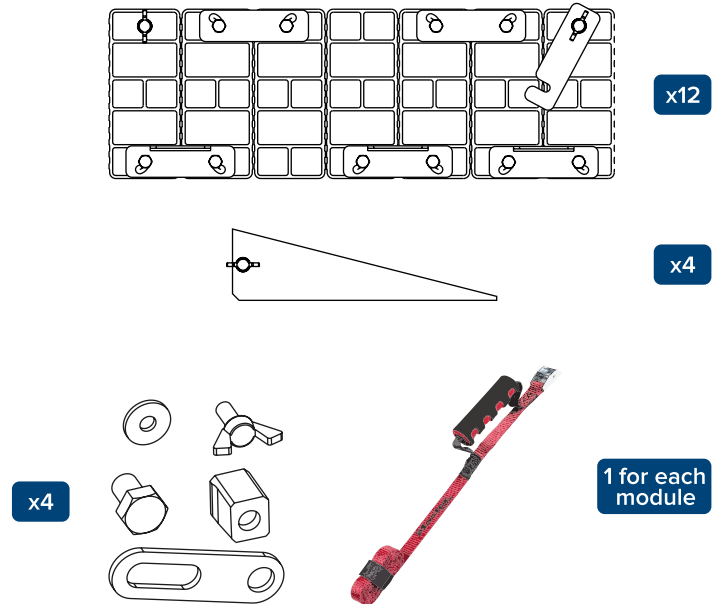
LMDK18

The kit is composed by modules LMD and ramps LMRD



LMEK12

The kit is composed by modules LME and ramps LMRE



Technical specifications

	LMDK18	LMEK12
Dimensions (LxHxW)	LMD: 650 x 59 x 900 mm LMRD: 201 x 54 x 900 mm	LME: 990 x 59 x 700 mm LMRE: 990 x 59 x 700 mm
Weight	LMD: 17 kg LMRD: 9,5 kg	LME: 19,3kg LMRE: 7,5 kg
Material	Alluminum	Alluminum
Max load	20 t for each module	20 t for each module

Installation



All the indication written in the WWS manual about surface and weighing area must be respected.

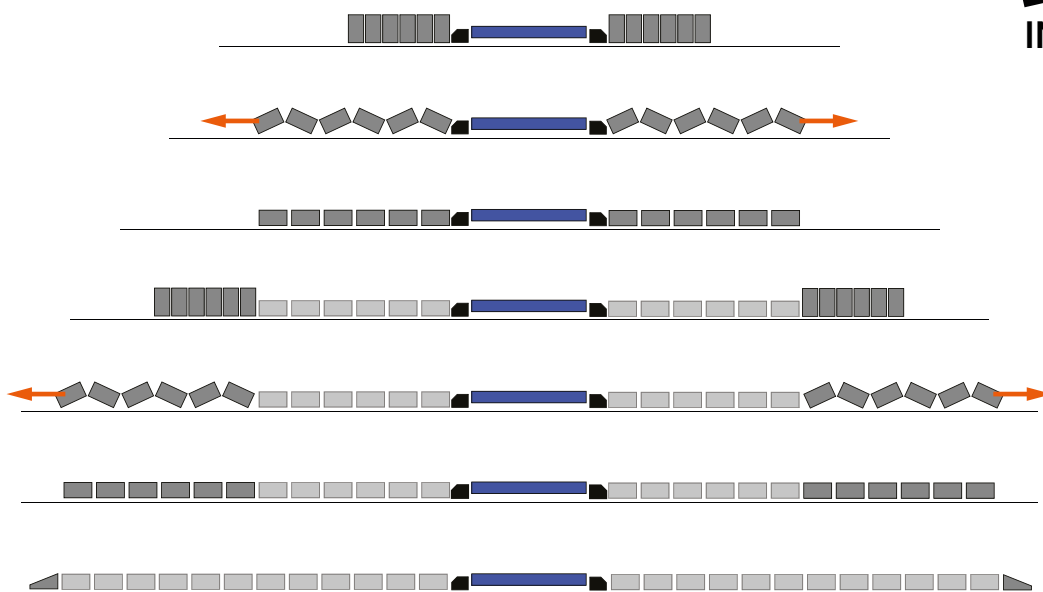


Always use cut resistant gloves and safety shoes during operation with leveling modules.



Danger of crushing hands and feet.

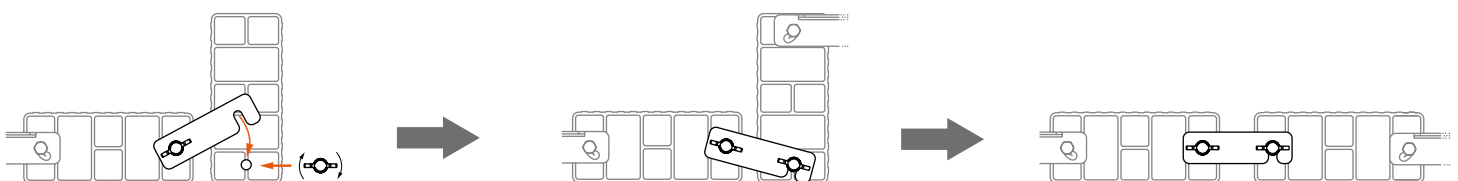
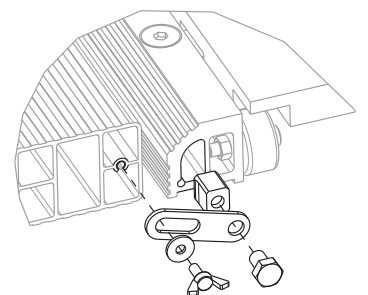
INSTALLATION PROCEDURE



**CHECK OUT THE
INSTALLATION VIDEO!**



1. Loosen the buckle and pull out the lace.
2. Place the first module next to the WWS and insert the pin inside the WWS. Secure the module using the bracket and screws provided.
3. Unfold the module.
4. Place the next module vertically beside the first, matching the pin to the slot in the bracket of the previous one. Tighten the bracket with the butterfly screw.

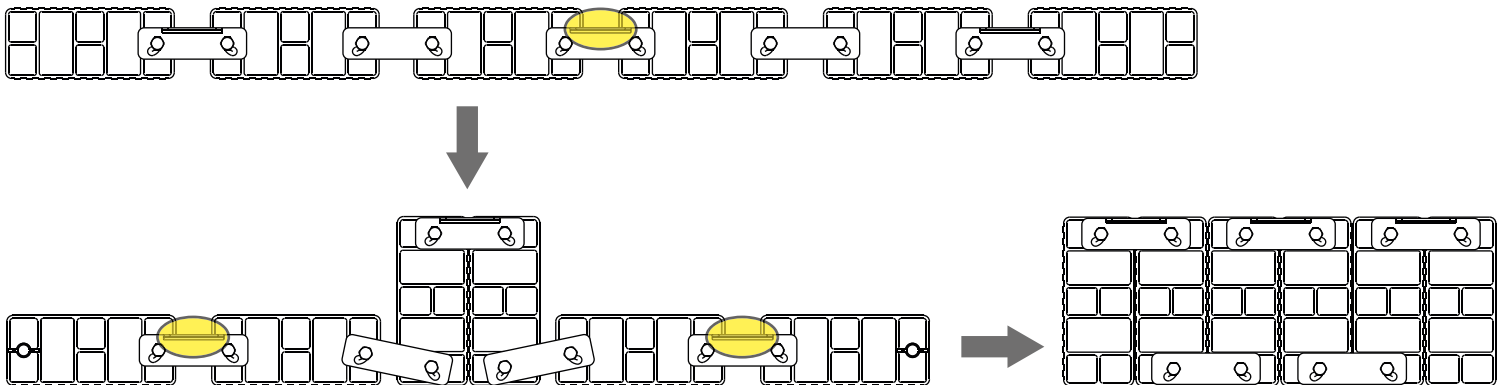


5. Unfold the module

6. Place the ramps near the last module, matching the pin to the slot in the bracket. Tighten the bracket with the butterfly screw.



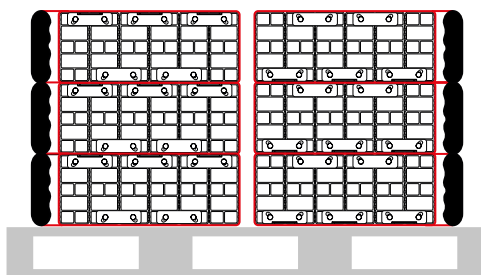
7. After weighing, if necessary, fold up the modules using the folds on the side brackets. For LME modules, start with the centre segments.



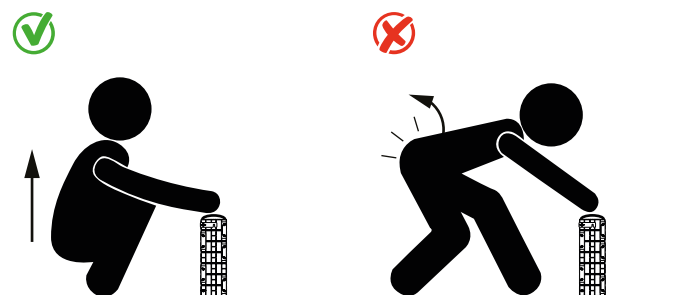
8. Tighten the lace firmly around the modules before transporting them.

Transport

Place the stacked modules on a pallet with the handle of the transport lanyard facing outwards



To avoid injuries, lift the modules according to good lifting practice.



Warnings



Attention danger of crushing hands



Attention danger of crushing feet

Notes



A RICE LAKE WEIGHING SYSTEMS COMPANY

HEAD OFFICE

Via Della Fisica, 20
41042 Spezzano di Fiorano, Modena - Italy
Tel. +39 0536 843418 - Fax +39 0536 843521

SERVICE ASSISTANCE

Via Dell'Elettronica, 15
41042 Spezzano di Fiorano, Modena - Italy
Tel. +39 0536 921784 - Fax +39 0536 926654

www.diniargeo.com

Timbro centro assistenza autorizzato

